



Presidencia de la Nación

Jefatura de Gabinete de Ministros

Unidad Plan Belgrano

Plan Belgrano

Jefatura de Gabinete
de Ministros

Unidad Plan Belgrano



Presidencia de la Nación

Plan Belgrano – Strategic Guidelines

Plan Belgrano

Social, Production and Infrastructure plan to reduce Inequality and promote Economic Growth in Northern Argentina

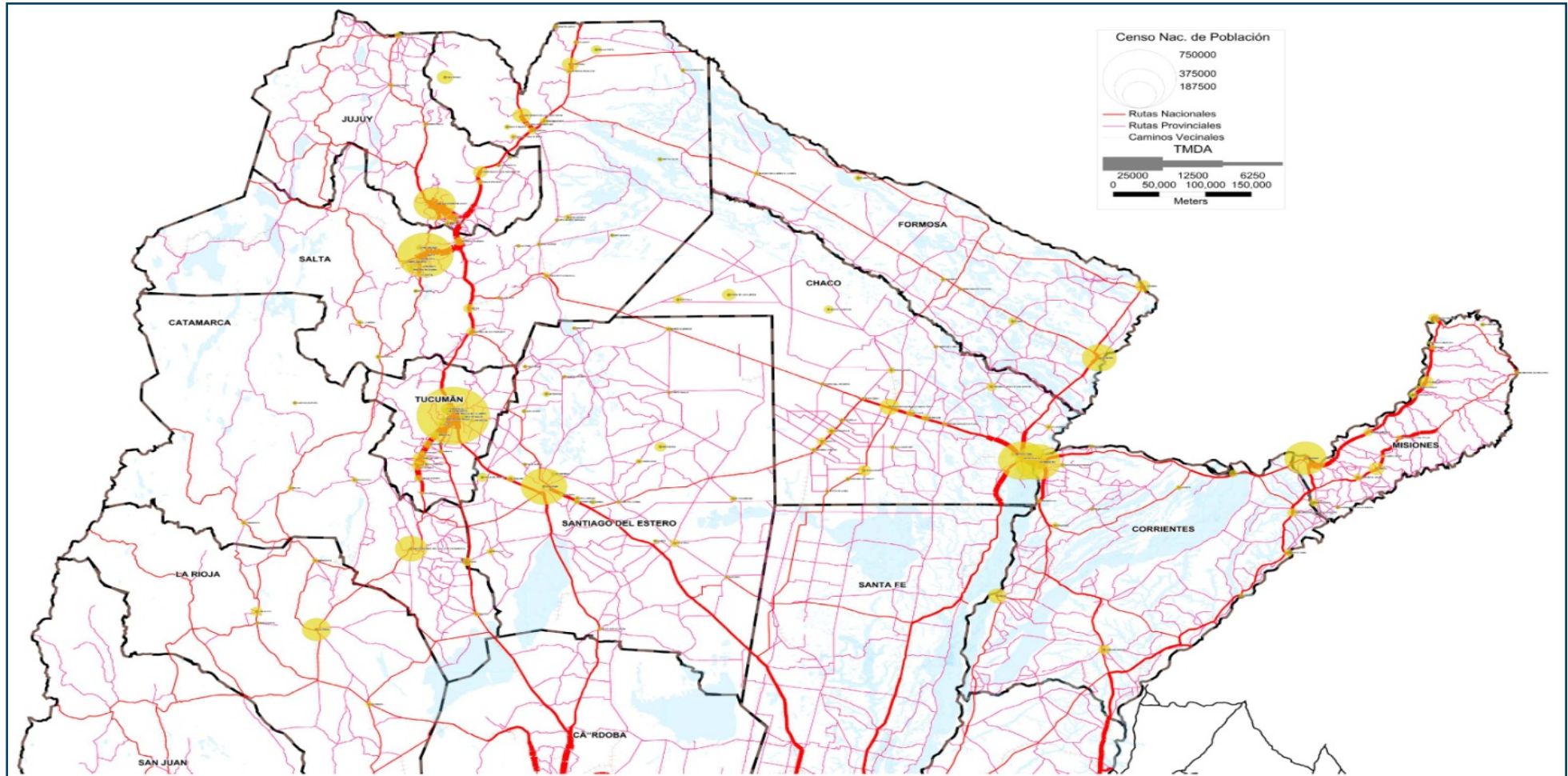
Strategic Guidelines:

- **Zero poverty - Equality of Opportunities**
- **Investment in Infrastructure**
- **Fight drug trafficking**

Northern Argentina – Structural economic problems

- One of the most underdeveloped regions in the country.
- 8,6 million of inhabitants (20% of Argentina).
- Highest concentration of poor households in the country.
- Lowest per capita income and employment rates.
- Lowest financial development (regional savings, loans and investment).
- Insufficient physical infrastructure + deficient transportation services = highest logistic costs.
- Limited productive - managerial capacities + low SMEs presence.
- Exports concentrated in low value-added and scarcely differentiated products (mainly primary activities).

Northern Argentina



Northern Argentina - Provinces

Northwest Argentina (NOA)

La Rioja
Catamarca
Salta
Jujuy
Tucumán
Santiago del Estero

Population: 4.911.412
Surface: 520.145 km²

Population: 8.591.291
Surface: 809.844 km²

Northeast Argentina (NEA)

Chaco
Formosa
Corrientes
Misiones

Population: 3.679.879
Surface: 289.699 km²

Zero Poverty and Equality of Opportunities

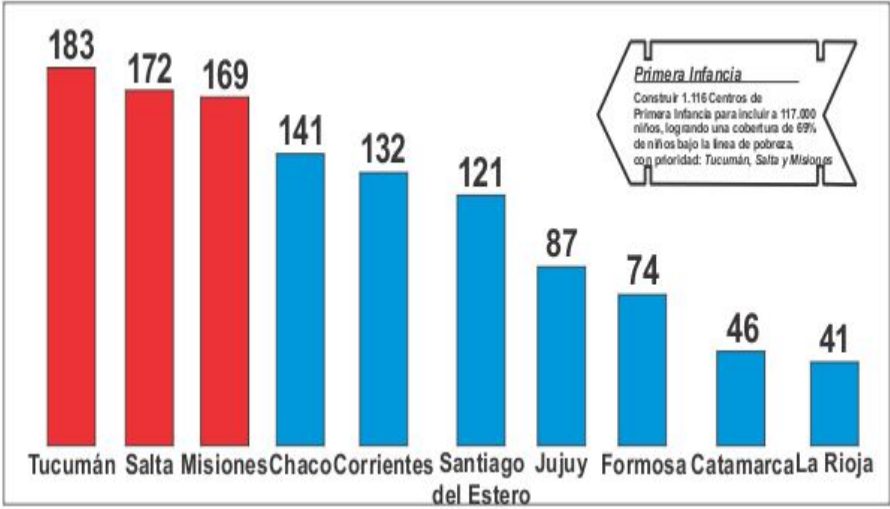
Zero Poverty and Equality of Opportunities

- Incorporation of 250.000 new minors at the Universal Child Allowance (AUH) coverage: 0 to 18-year-olds who are children of unemployed and informal workers as well as beneficiaries of other programmes who were transferred to AUH.
- 250.000 new houses and 1,7 million drinking water and sewer connections.
- 1.116 new Early Childhood Centers.
- 100% school coverage for 3, 4 and 5-year-old children.
- 100% schools with internet connection.
- Primary Healthcare Centers, New Public Hospitals and more health professionals.
- Reduction of trade barriers.
- Regional economies promotion.
- First Employment Policy.

Zero Poverty - Equality of Opportunities

Early Childhood Centers

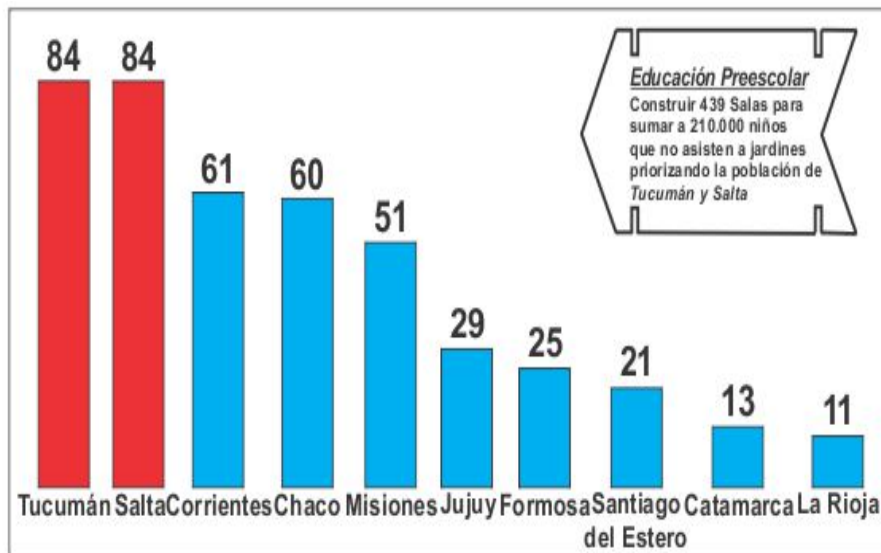
1.116 new Early Childhood Centers



Zero Poverty - Equality of Opportunities

100% school coverage from early age

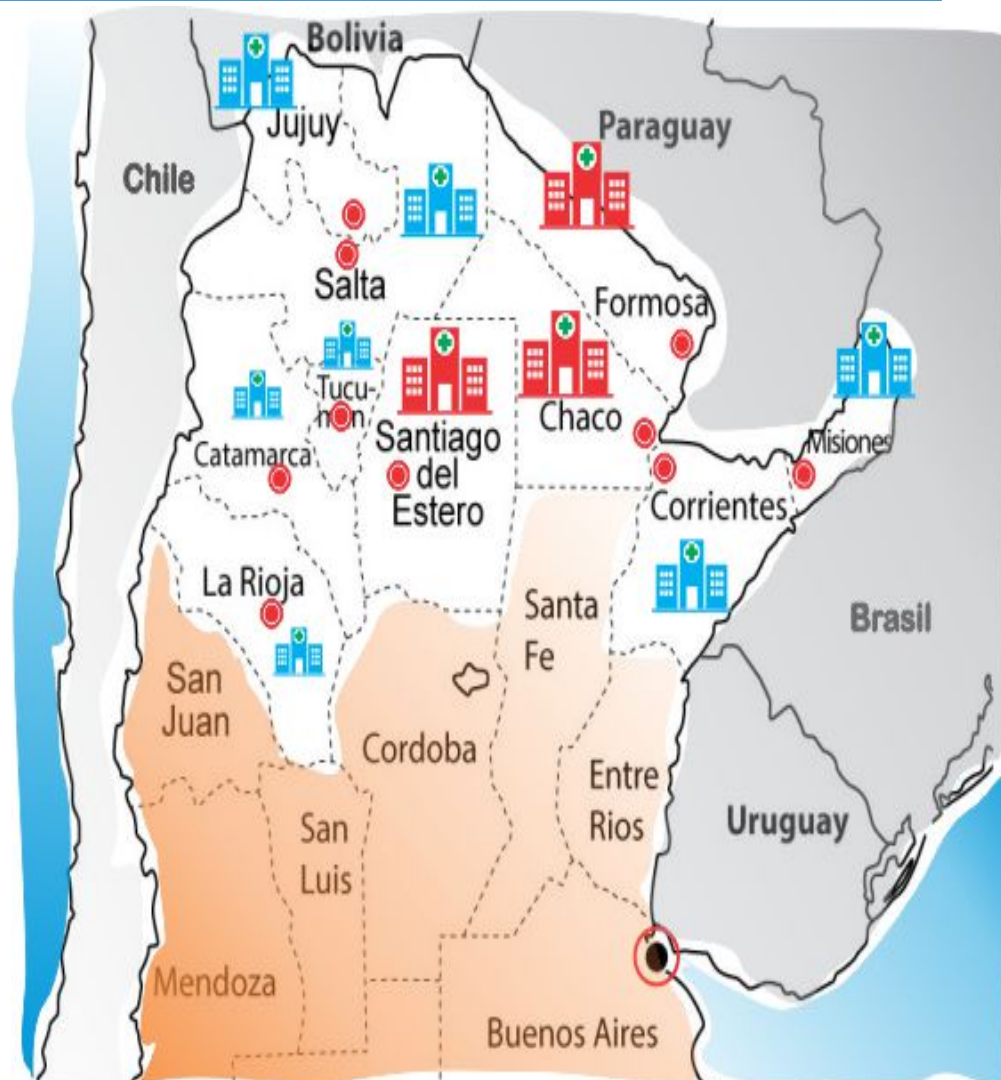
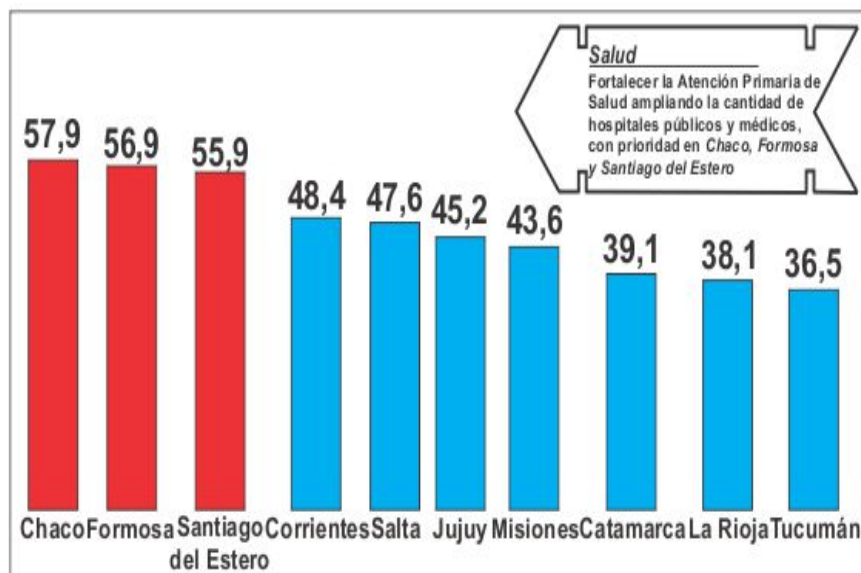
100% school coverage for 3, 4 and 5-year-old children



Zero Poverty - Equality of Opportunities

Primary healthcare – Centers for Primary Healthcare

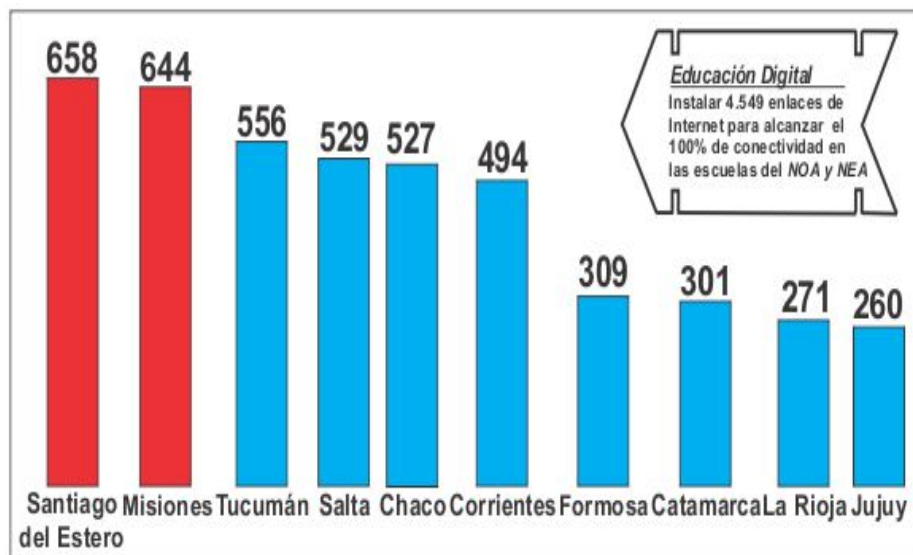
Polyclinics as link between Centers for Primary Healthcare (COPC) and Public Hospitals



Zero Poverty - Equality of Opportunities

100% Northern Argentina schools connected

4.549 new internet school connections

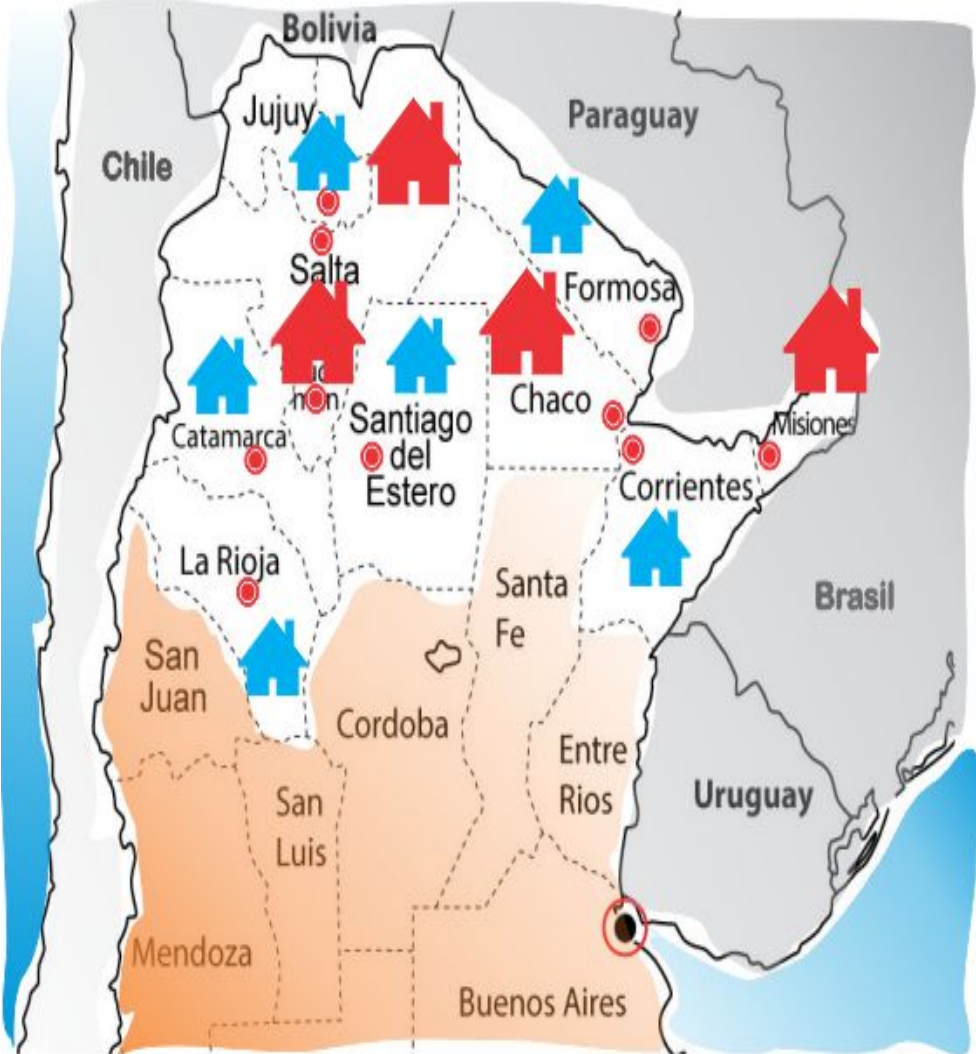
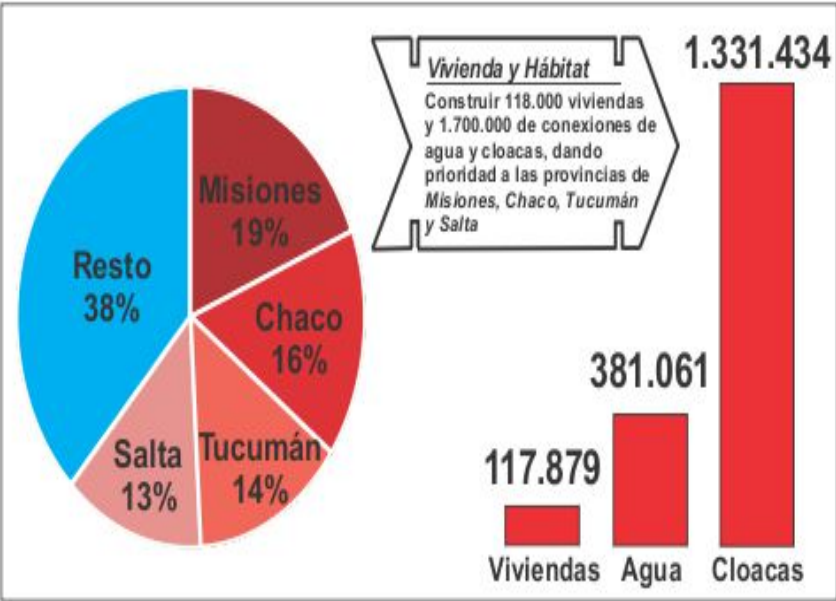


Zero Poverty - Equality of Opportunities

Housing, potable water and sewage coverage

250.000 new houses

1,7 million drinking water and sewer connections



Plan Belgrano – Housing development

Northern Argentina new home building will be achieved by:

- Housing mortgage loans indexed by new Unidad de Vivienda (UVI) for the middle-income segment.
- PROCREAR housing loans for low-income segment.

✓ Microcredit for house improvements for low-income population who typically lack of collateral guarantees.

Plan Belgrano – Plan Nacional de Agua Potable y Saneamiento

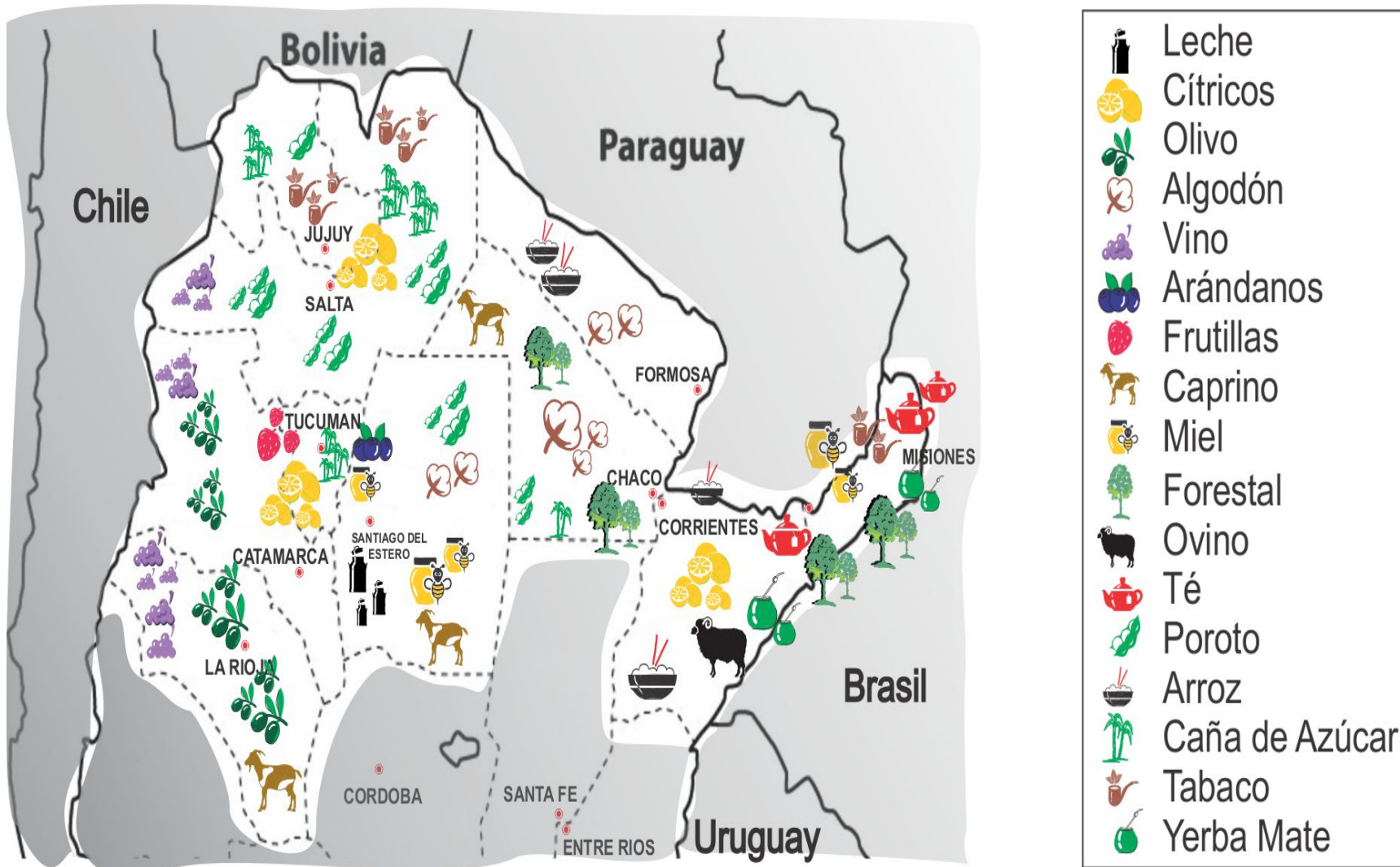
- ✓ Main objective: to achieve by 2019 100% drinking water and 75% sewer coverage in urban areas.
- ✓ This means 8,2 million people incorporated to drinking water coverage and 8,9 million to sewer system all around the country.
- ✓ Projected investment: USD 21.612 million: USD 8.220 million in drinking water and USD 13.392 million in sewer system.
- ✓ Plan Belgrano region projected investment: around 40%.
- ✓ For this, feasibility level projects are required.

Regional economies

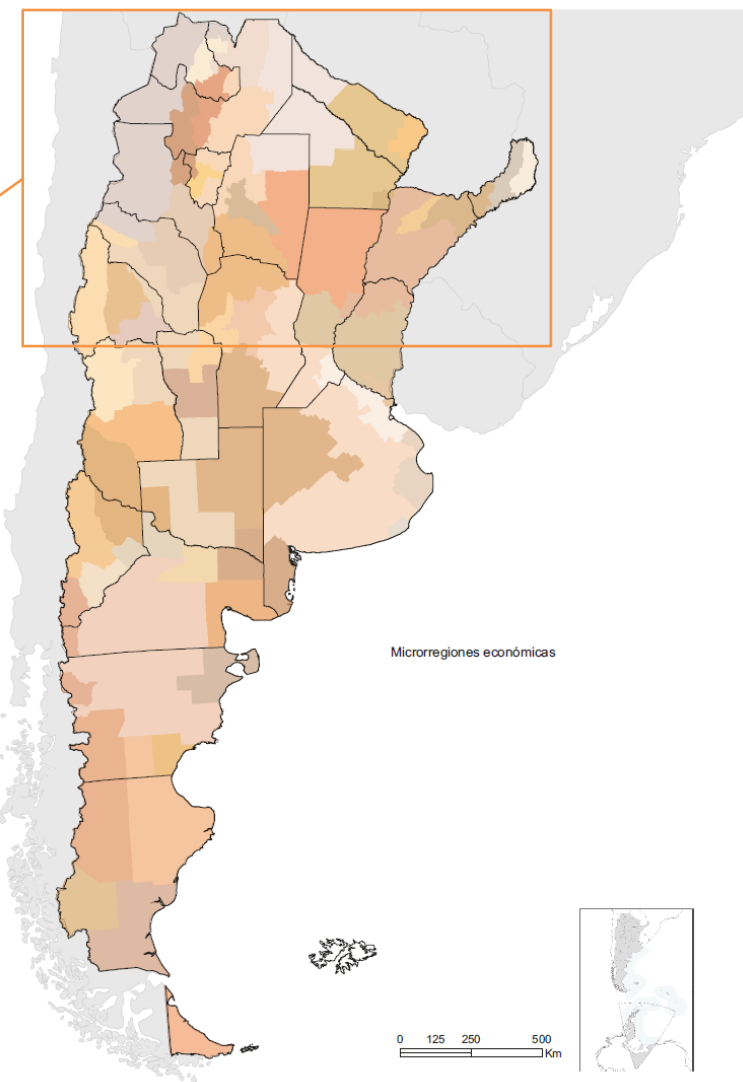
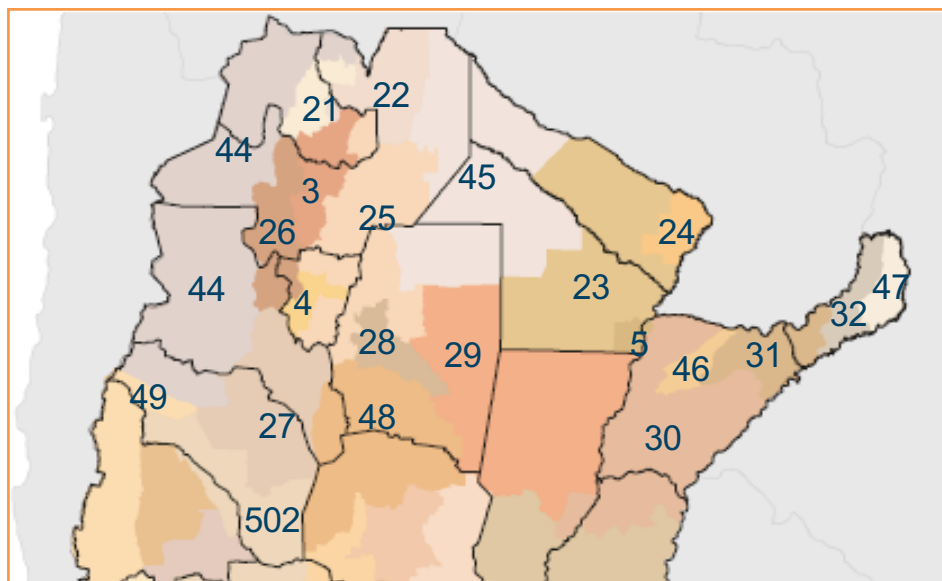
Specific measures for regional economies:

- International trade negotiations and sanitation for the citrus industry;
- Reorganization of Tobacco National Fund.
- Livestock development Plan.
- Cotton National Fund: correct distribution and transparency.
- Forest sector promotion.
- Tourism and other high added value services.
- Sugar cane activity: incorporation of growing percentages of bioethanol in gasoline (E22); key role for biomass and renewable energies.

Regional economies



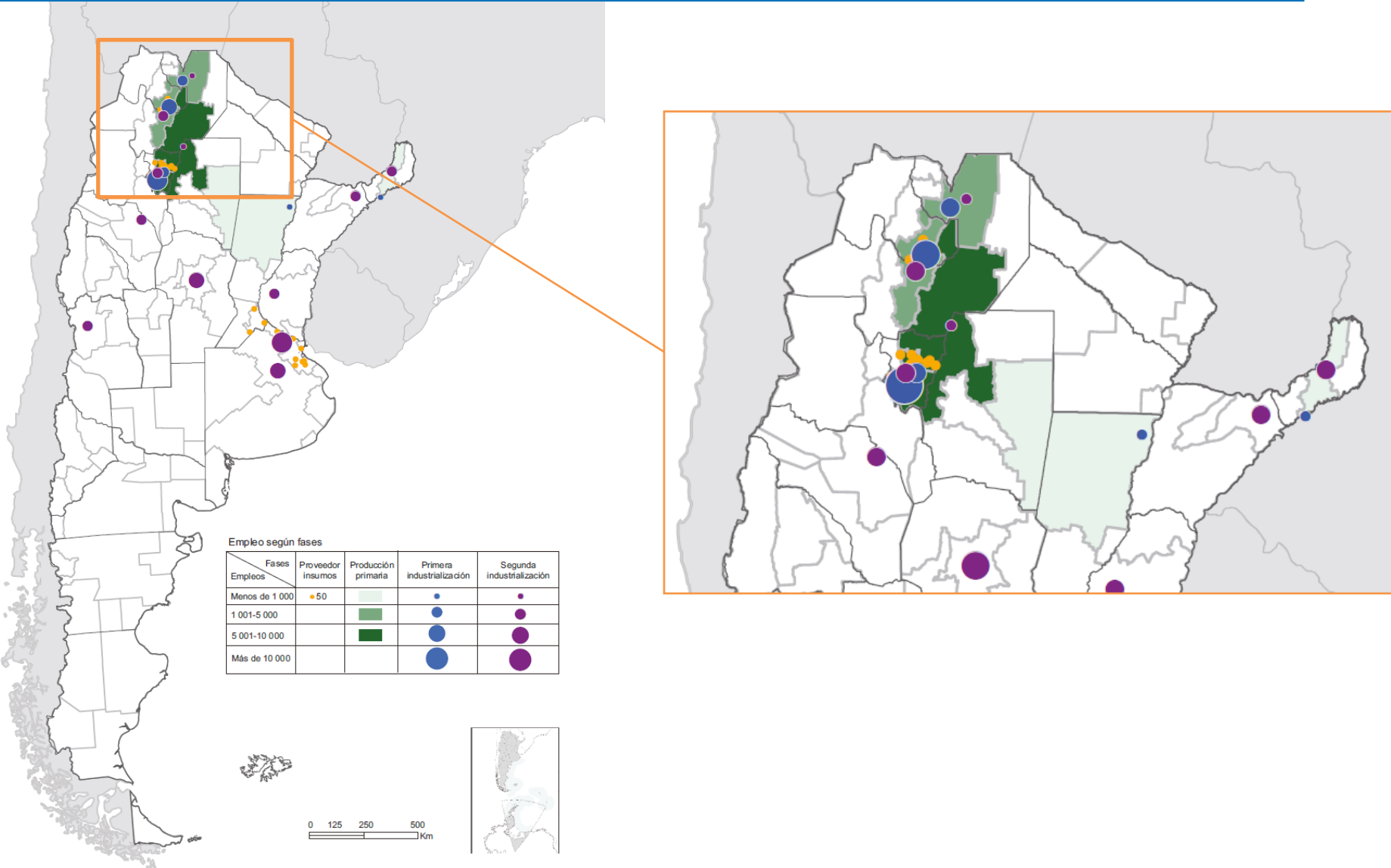
Northern Argentina Regional Economies (SSTP and CEPAL)



- | | |
|--|--|
| 3 - Nodos Salta y Jujuy | 29 – Llanura Chaqueña Húmeda sur |
| 4 – Nodo Tucumán | 30 – Mesopotámica Central |
| 5 – Nodo Corrientes -Resistencia | 31 – Sudeste Misiones noreste Corrientes |
| 21 - Quebrada de Humahuaca | 32 – Centro Oeste Misiones |
| 22 - Tartagal-Orán | 44 - Cordillera norte (puna) |
| 23 – Llanura Chaqueña Húmeda norte | 45 - Chaco Seco |
| 24 – Nodo Clorinda - Formosa | 46 – Esteros del Ibera Corrientes |
| 25 - Umbral al Chaco | 47 – Noreste de Misiones |
| 26 - Valles y serranías Salta y Catamarca | 48 – Sur de Santiago del Estero Norte de Córdoba |
| 27 – Valles y Serranías Catamarca y La Rioja | 49 – Alta Cordillera Cuyana |
| 28 – Centro de Santiago del Estero | 502 – Franja Árida Cuyana |

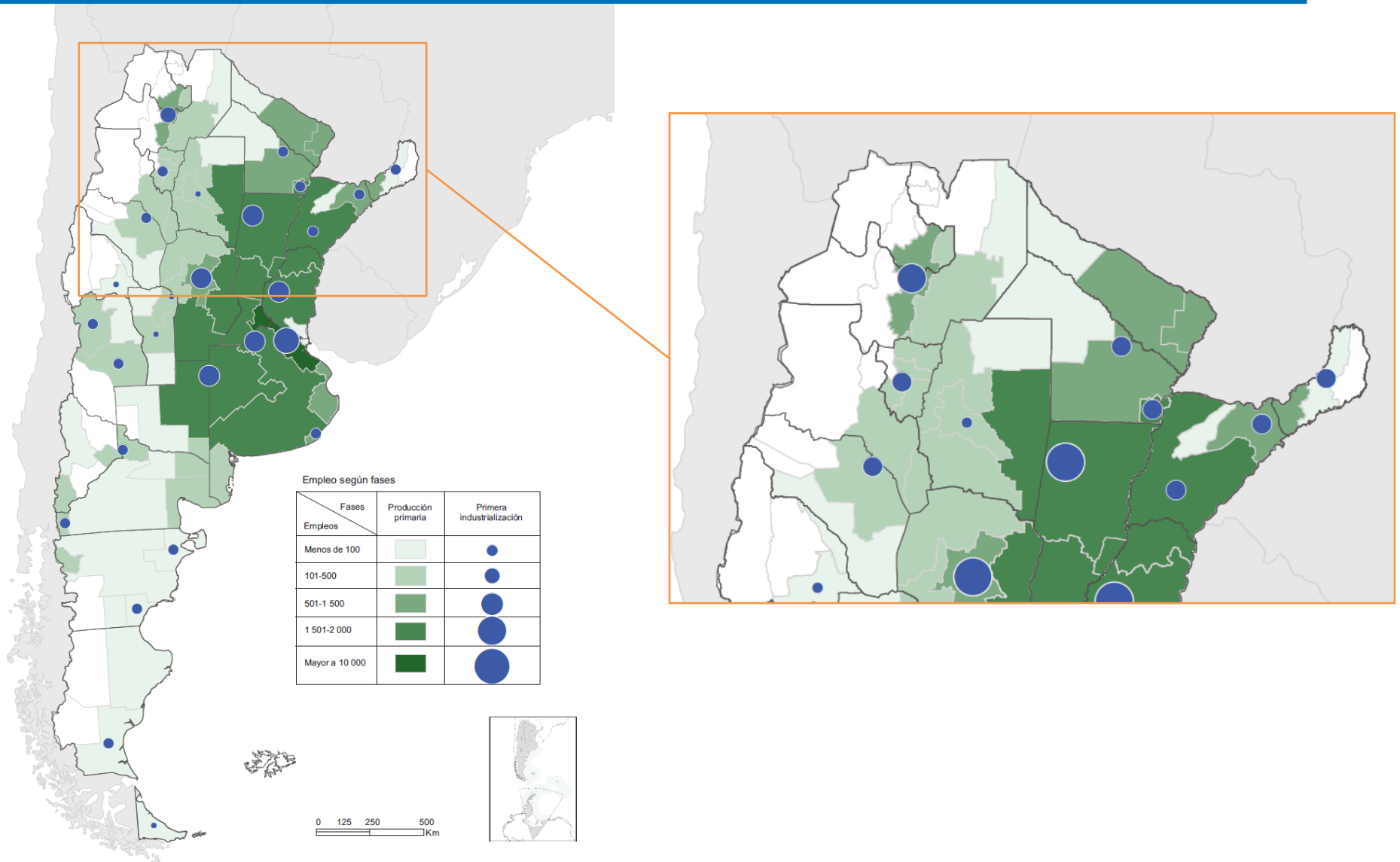
: Comisión Económica para América Latina y el Caribe (CEPAL).

Sugarcane Value Chain



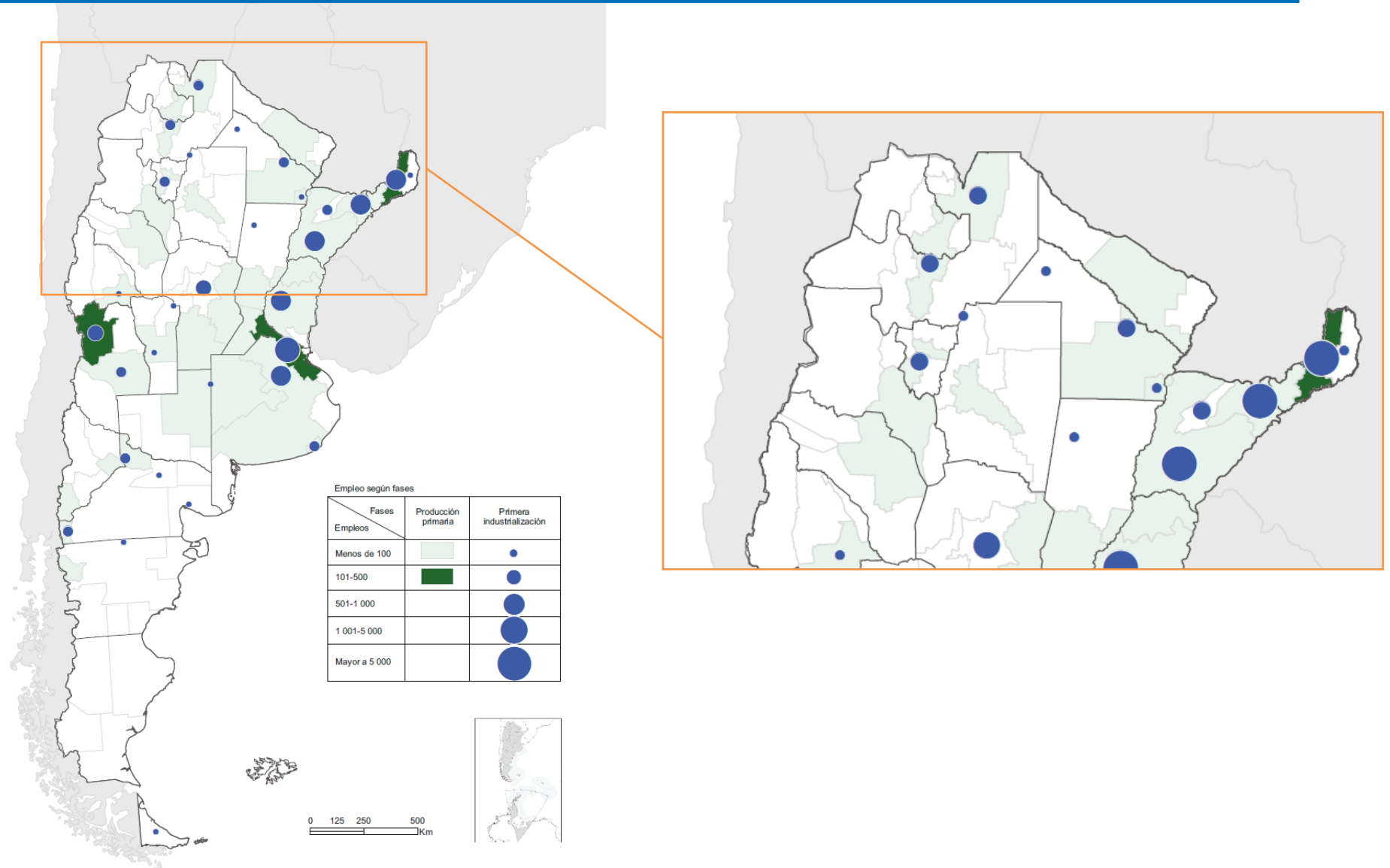
Fuente: Comisión Económica para América Latina y el Caribe (CEPAL).

Livestock Value Chain



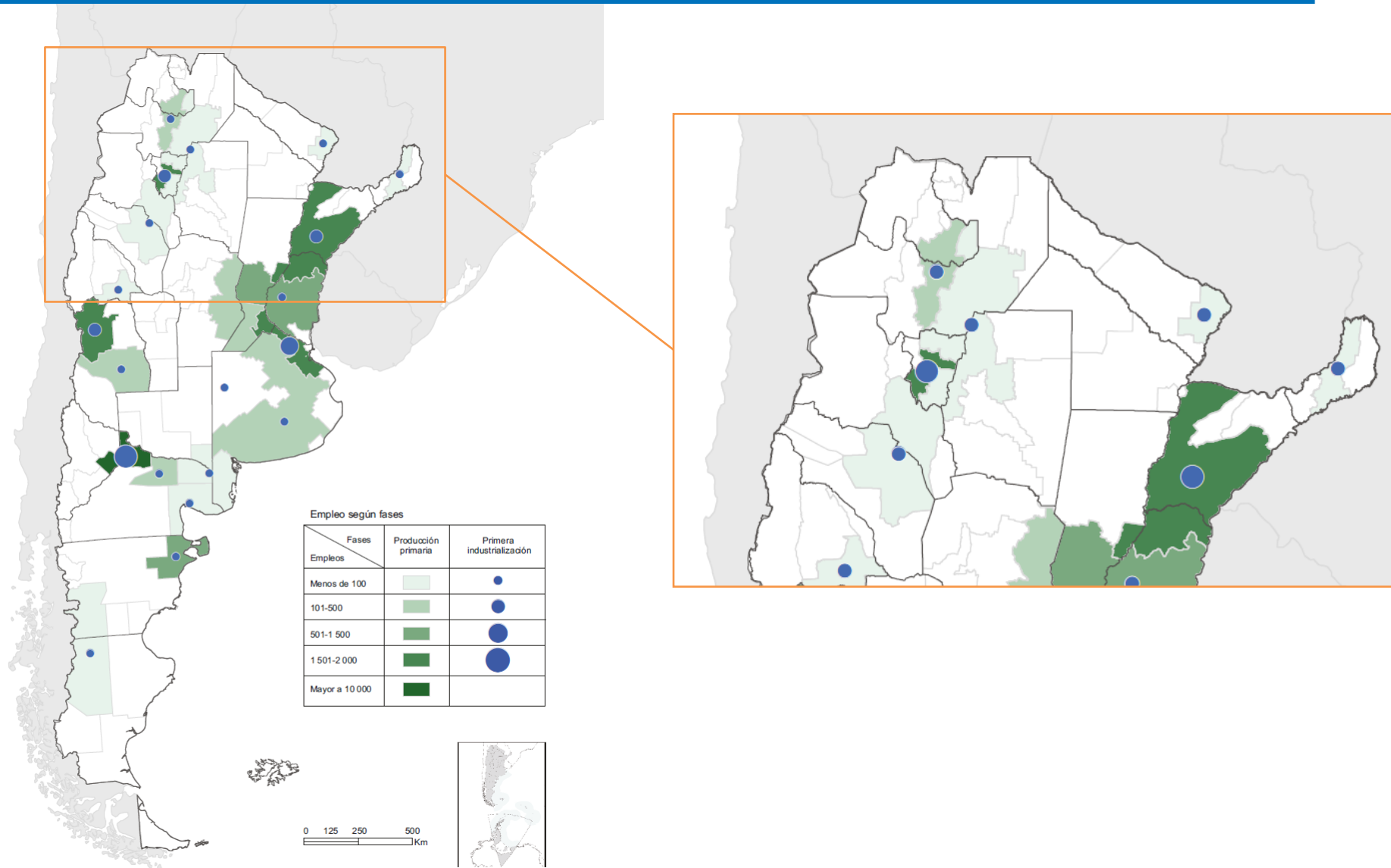
Fuente: Comisión Económica para América Latina y el Caribe (CEPAL).

Forest-based Value Chain



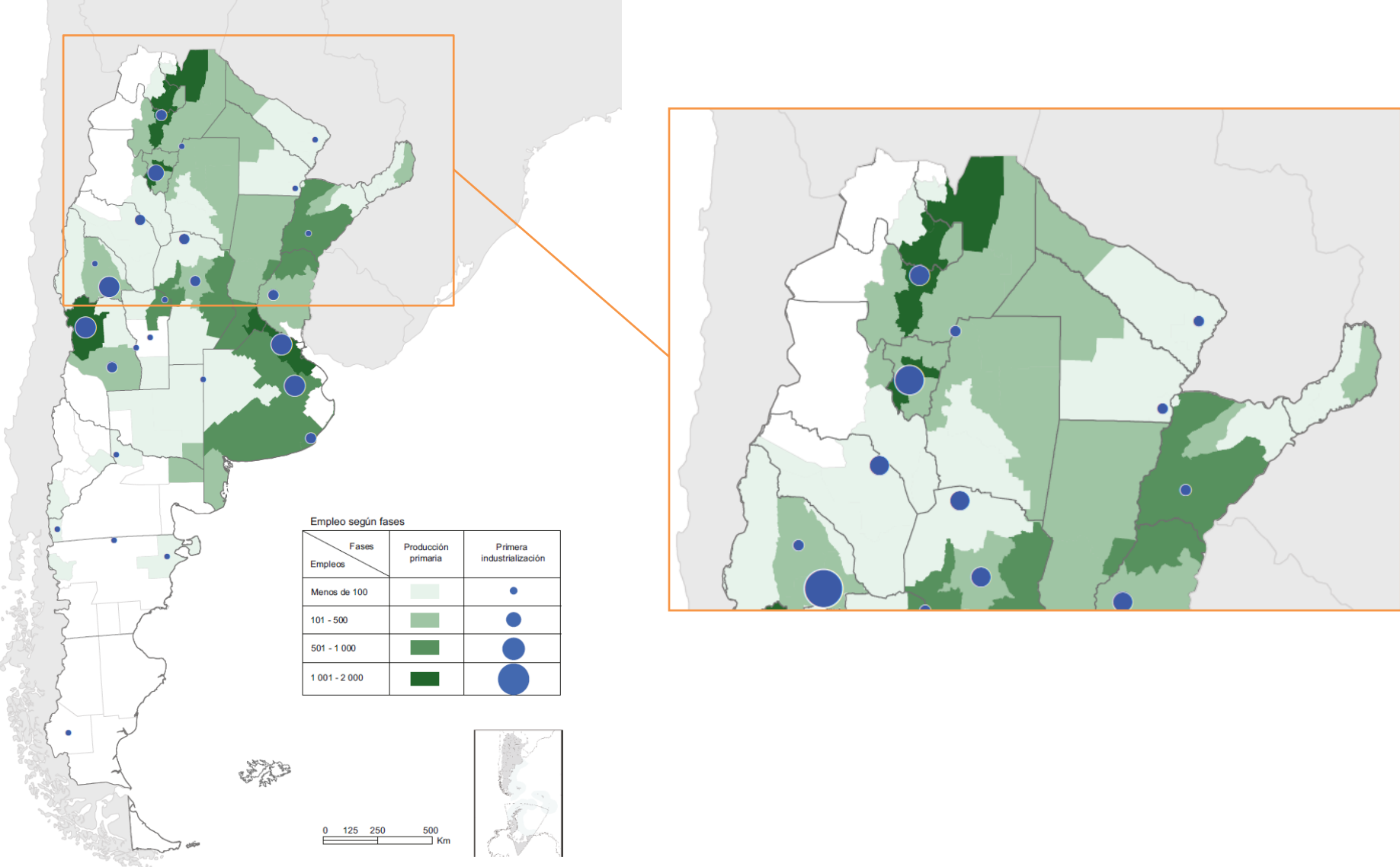
Fuente: Comisión Económica para América Latina y el Caribe (CEPAL).

Fresh Fruits Value Chain



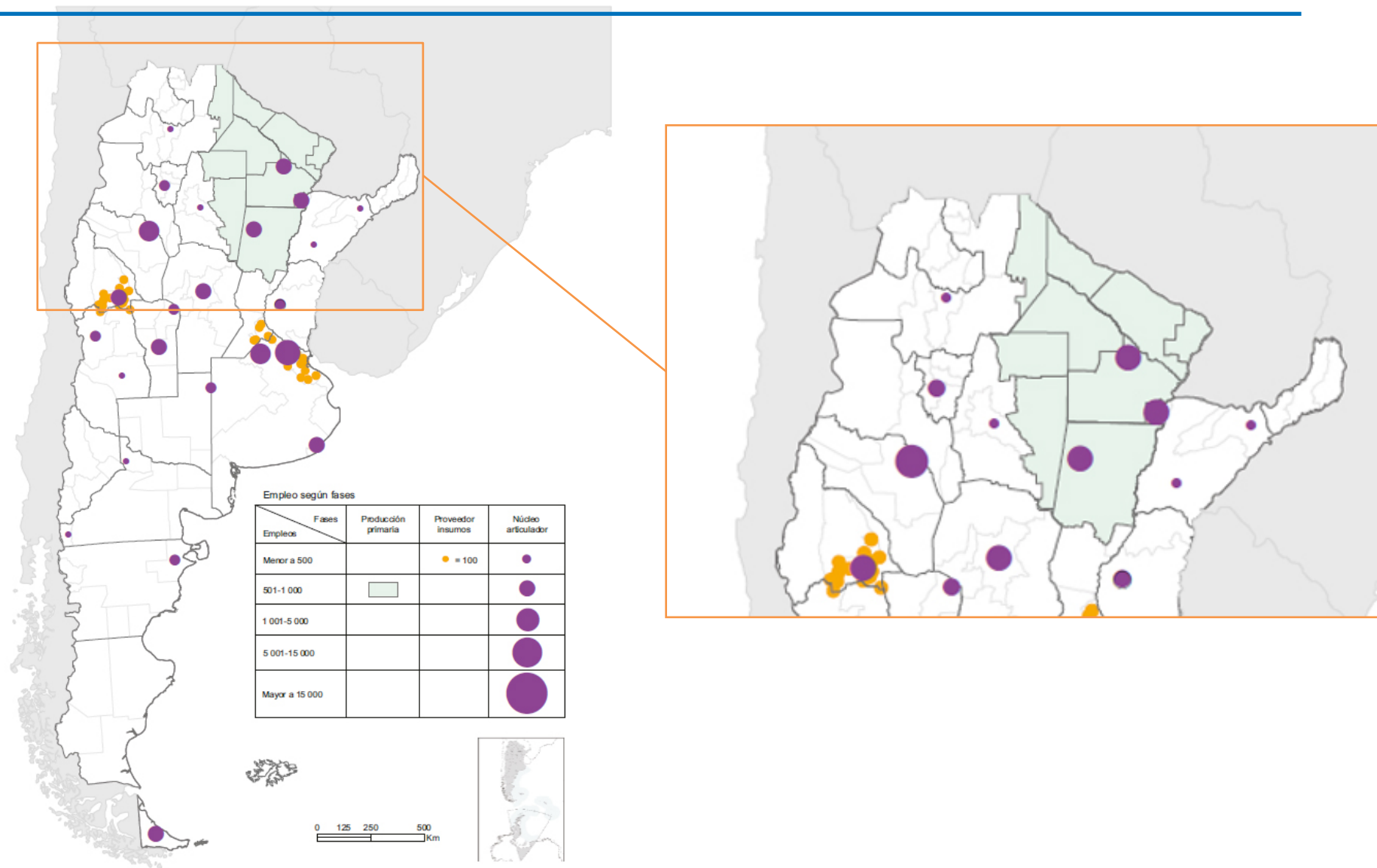
Fuente: Comisión Económica para América Latina y el Caribe (CEPAL).

Vegetable-based Value Chain



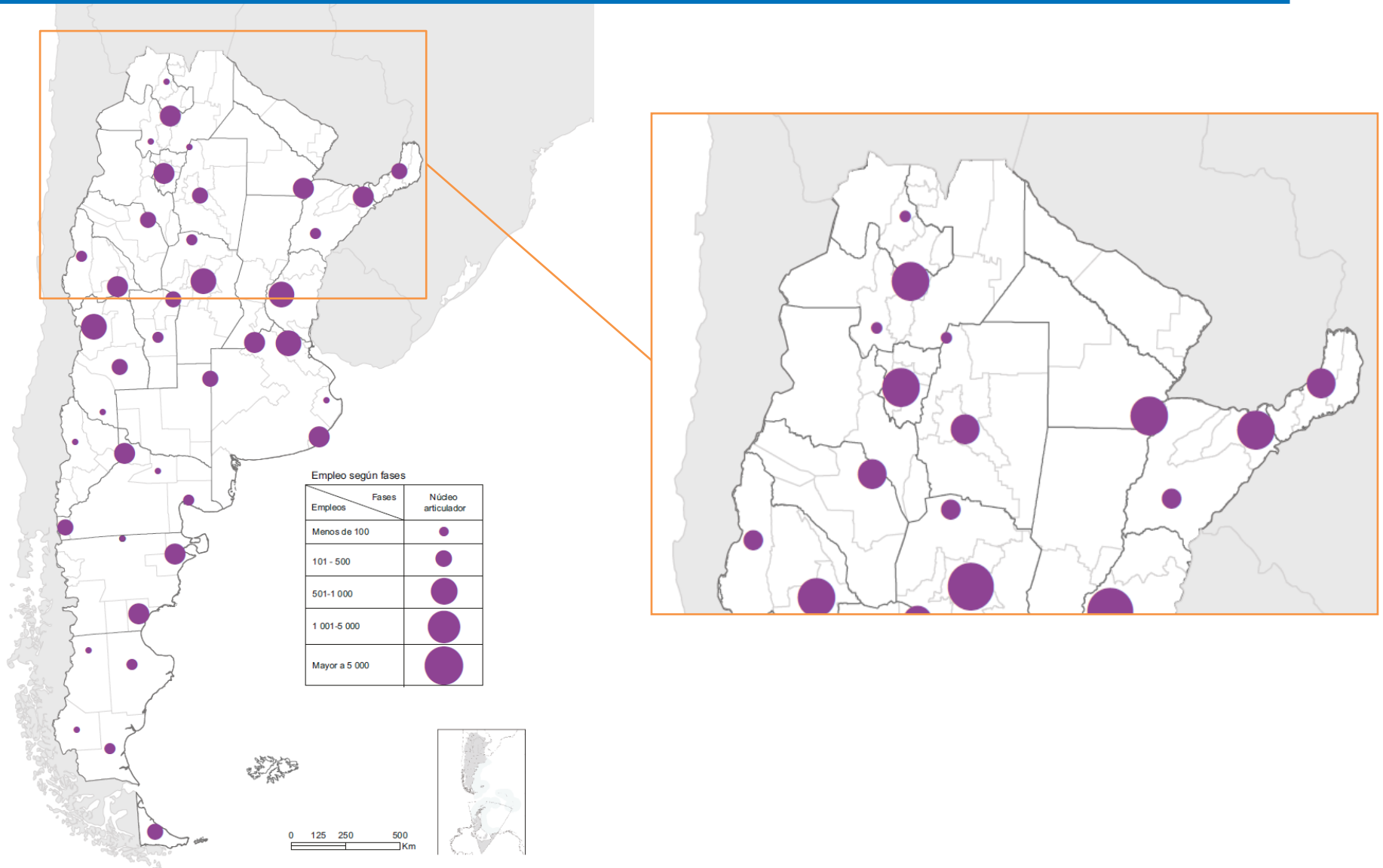
Fuente: Comisión Económica para América Latina y el Caribe (CEPAL).

Textile and Clothing Value Chain



Fuente: Comisión Económica para América Latina y el Caribe (CEPAL).

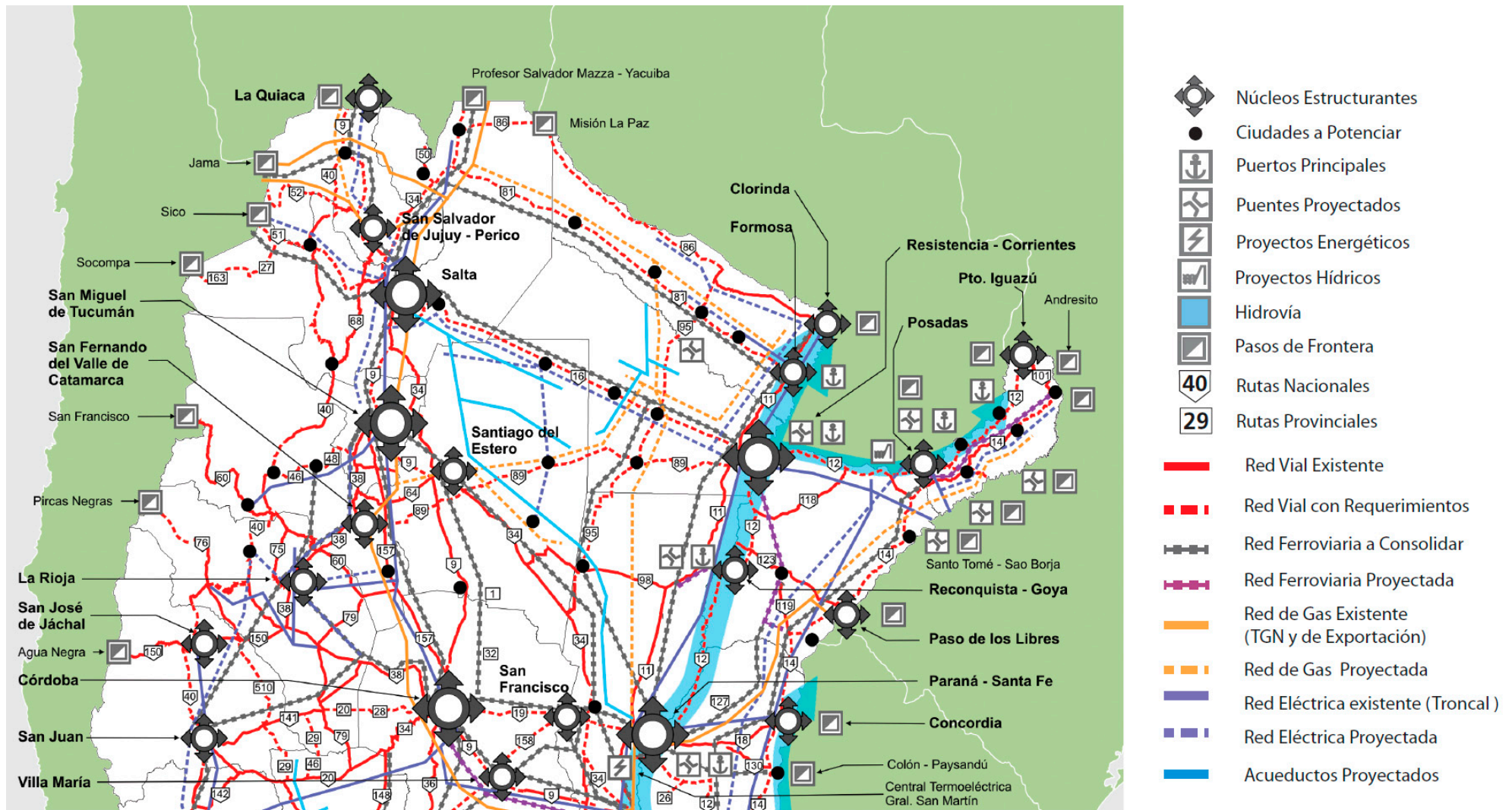
Tourism sector



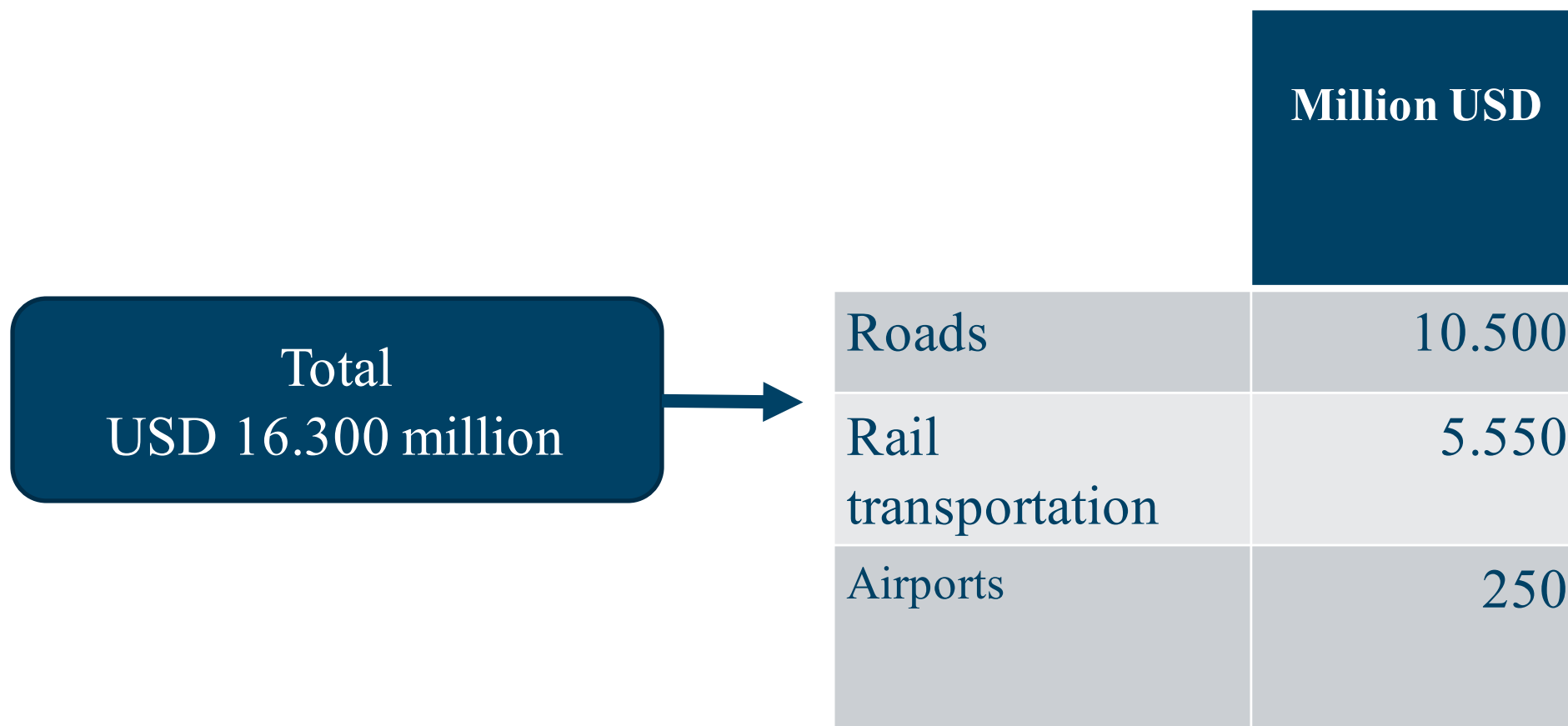
Fuente: Comisión Económica para América Latina y el Caribe (CEPAL).

Infrastructure

Infraestructura - Desired territorial model



Projected investment in transportation infrastructure



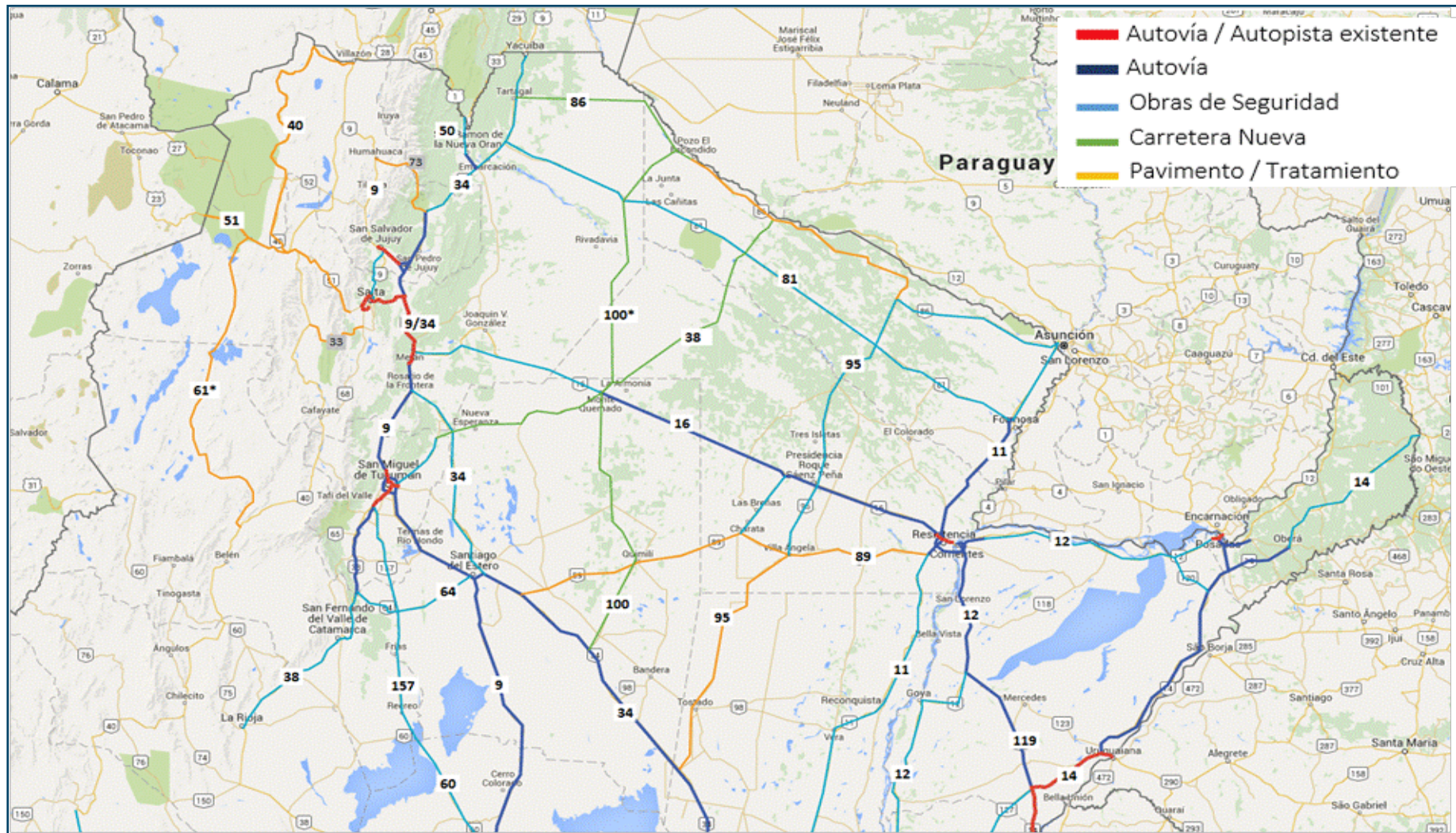
Infrastructure for Economic Development - Roads

USD 10.500 million projected investment

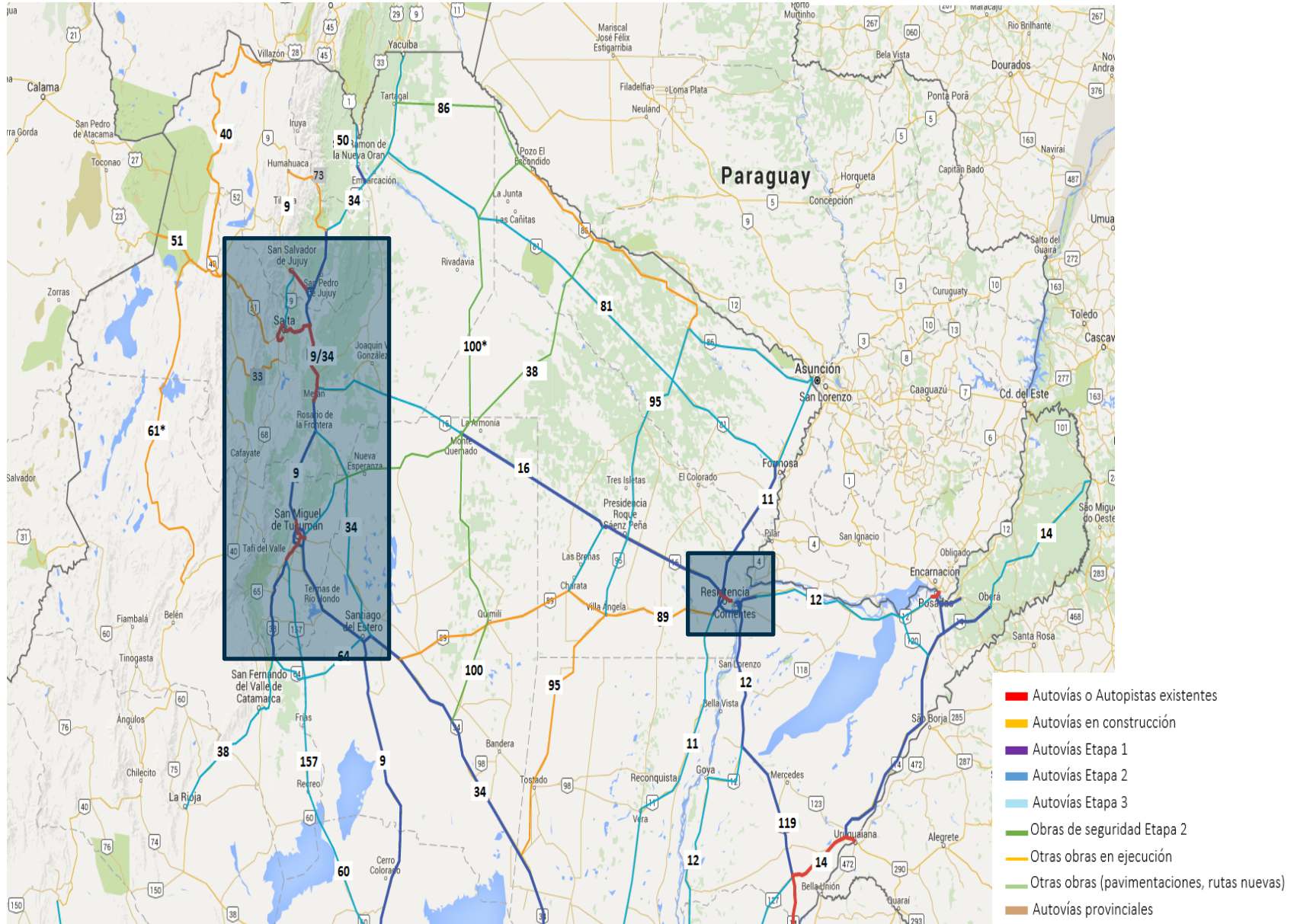
Objectives:

- North-South / East-West connectivity.
- Connectivity between main urban areas and small isolated towns.
- National and provincial roads improvements for all type of vehicle and climate condition.
- Local cities traffic separation from other traffic flows.
- Bottlenecks and congestion reduction in key nodes.

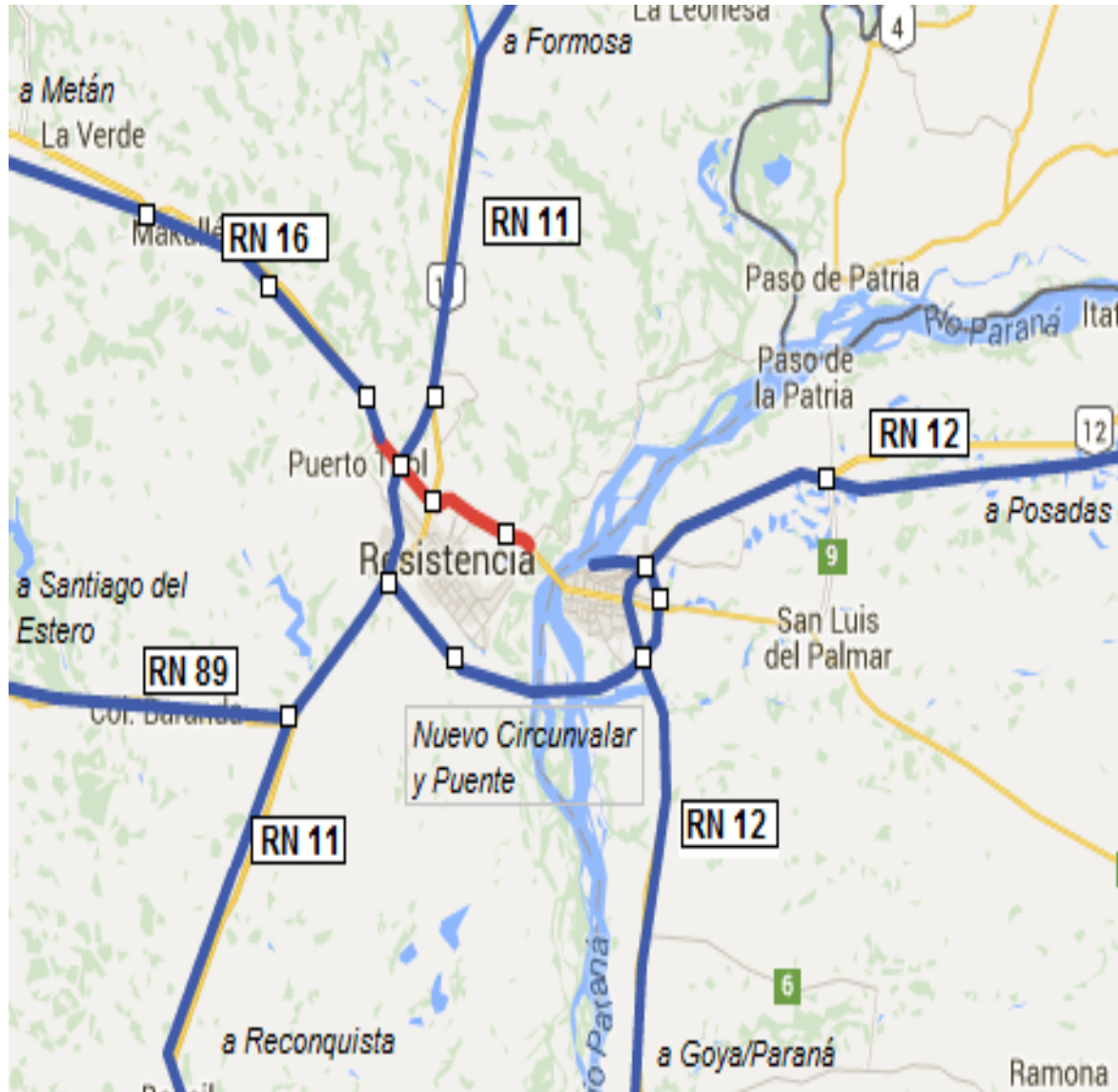
Infraestructura - Roads



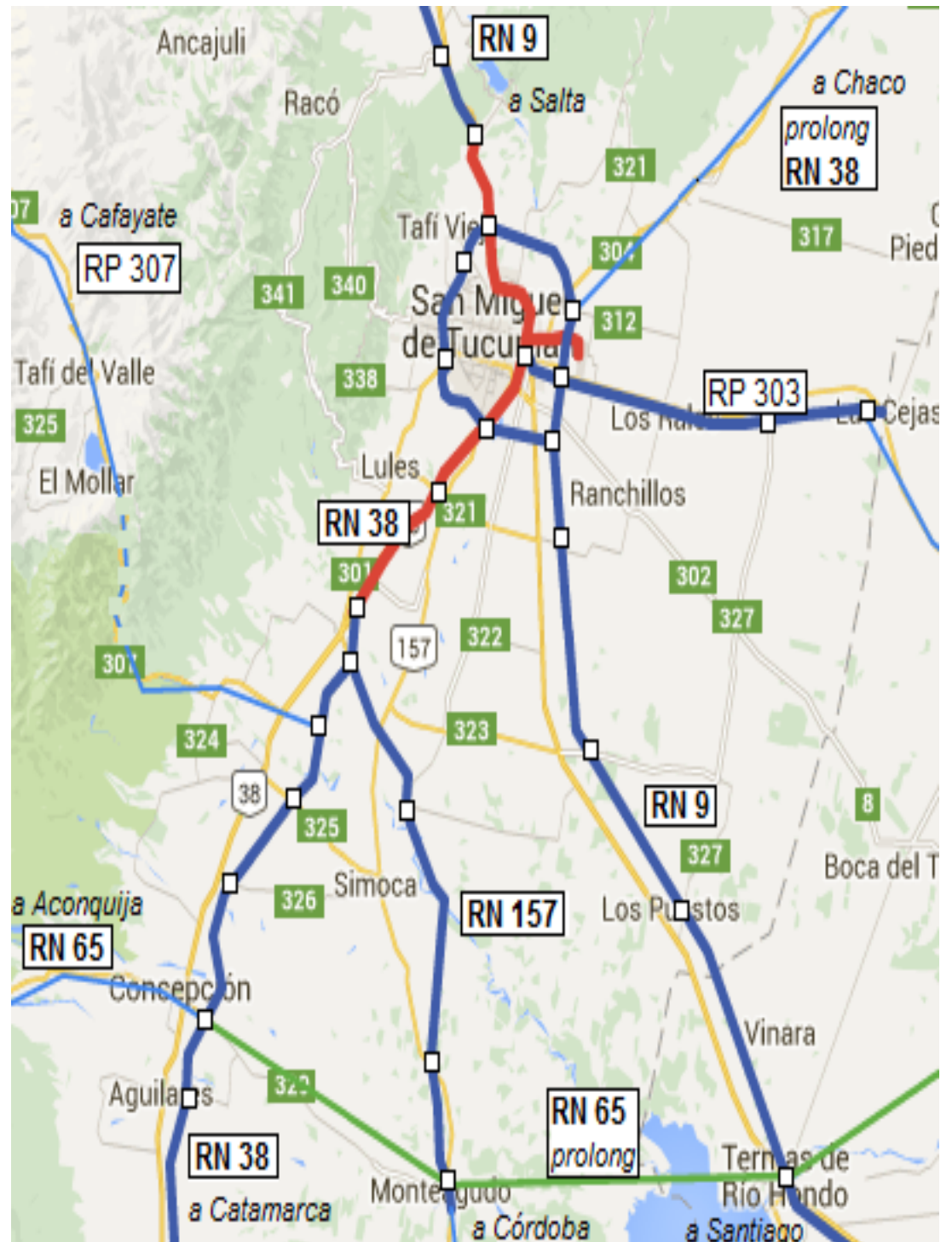
National Routes 9 and 34 / National Routes 11 and 12



NEA: Connectivity Formosa – Chaco – Corrientes – Misiones National Routes 11, 12, 16 and 89

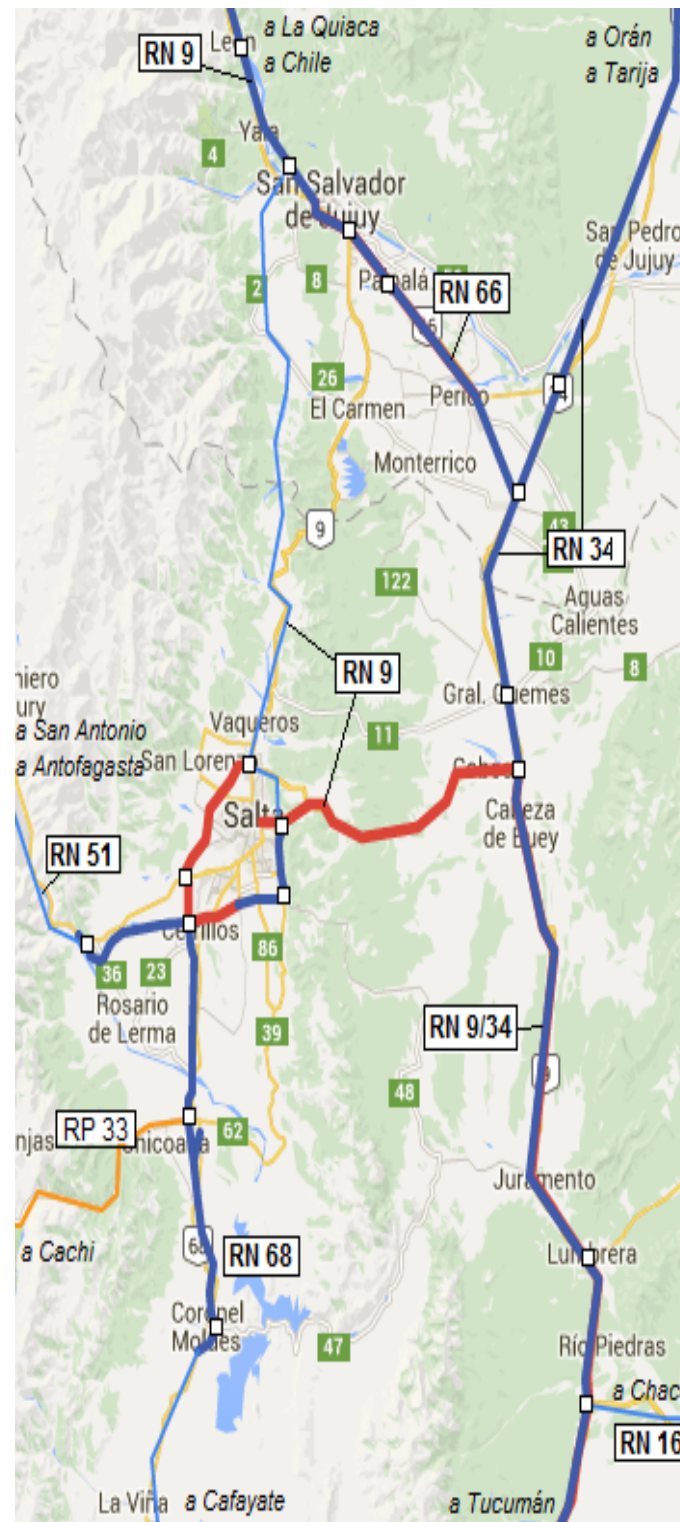


NOA: Tucumán San Miguel as a regional key node



NOA: Salta – Jujuy and connectivity with Bolivia and Chile

National Routes 9, 34 68 and 51

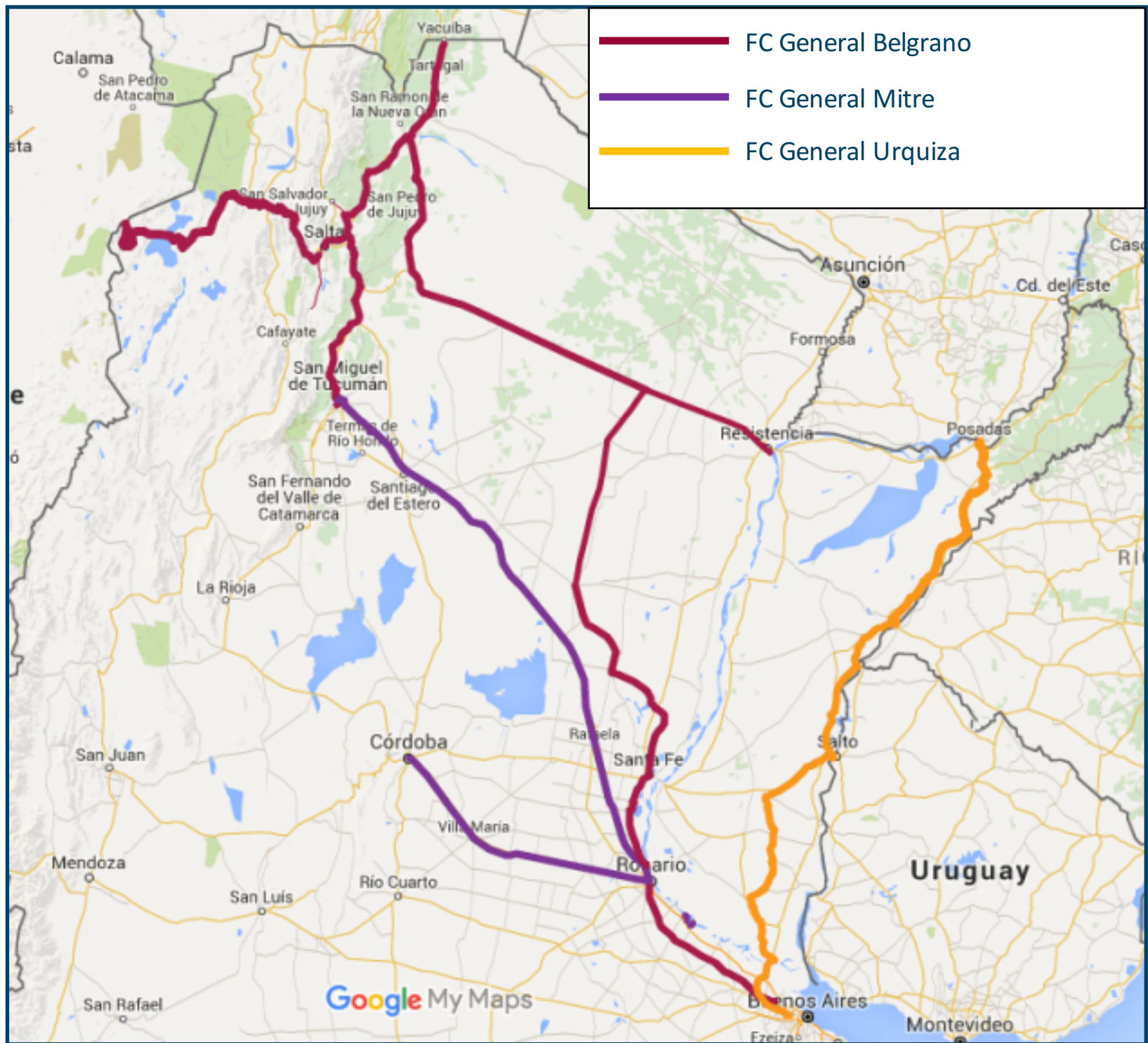


Infrastructure – Rail transport

USD 5.550 million projected investment

Objectives:

- NOA/NEA railway system connectivity.
- Tucumán, Güemes (Salta), Recreo (Catamarca), Palpalá (Jujuy) and Avia Terai (Chaco) logistic nodes.
- 3.800 km railway renovation.
- 850 km railway improvement.
- Connectivity with Rosario and Buenos Aires/La Plata ports through FC Mitre.
- Bypass in Tucumán and improvement of FC Belgrano-FC Mitre connectivity.
- FC Belgrano: (i) agriculture products to Rosario port; (ii) connectivity with FC Mitre; (iii) connectivity with Hidrovia Paraguay – Paraná (iv) international connectivity with Bolivia and Chile.
- FC Urquiza from Posadas to Buenos Aires railway renovation.



Infrastructure - Railways

LINE	Railway line	Km	Million USD	Period
FC Mitre	Tucumán – Rosario (Sta. Fe)	750	1.125	I Sem. 2016 - I Sem. 2018
FC Belgrano	JV González (Salta) – Avia Terai (Chaco)	400	550	I y II Sem. 2016
	Avia Terai (Chaco) – Barranqueras (Chaco)	200	250	I y II Sem. 2016
	Avia Terai (Chaco) – Rosario (Sta. Fe)	800	1.050	I y II Sem. 2016
	Salvador Mazza (Salta) – S. S. de Jujuy – Tucumán	1.250	1.625	II Sem. 2016 to I Sem. 2017
	Socompa (Salta) – Güemes (Salta)	150	200	II Sem. 2016 to I Sem. 2017
FC Urquiza	Posadas (Misiones) – Buenos Aires	1.000	550	I Sem. 2017 to II Sem. 2018
Subtotal		3.550	1.125	
Railway bypass Tucumán			200	
TOTAL			5.550	

Infraestructura - Airports

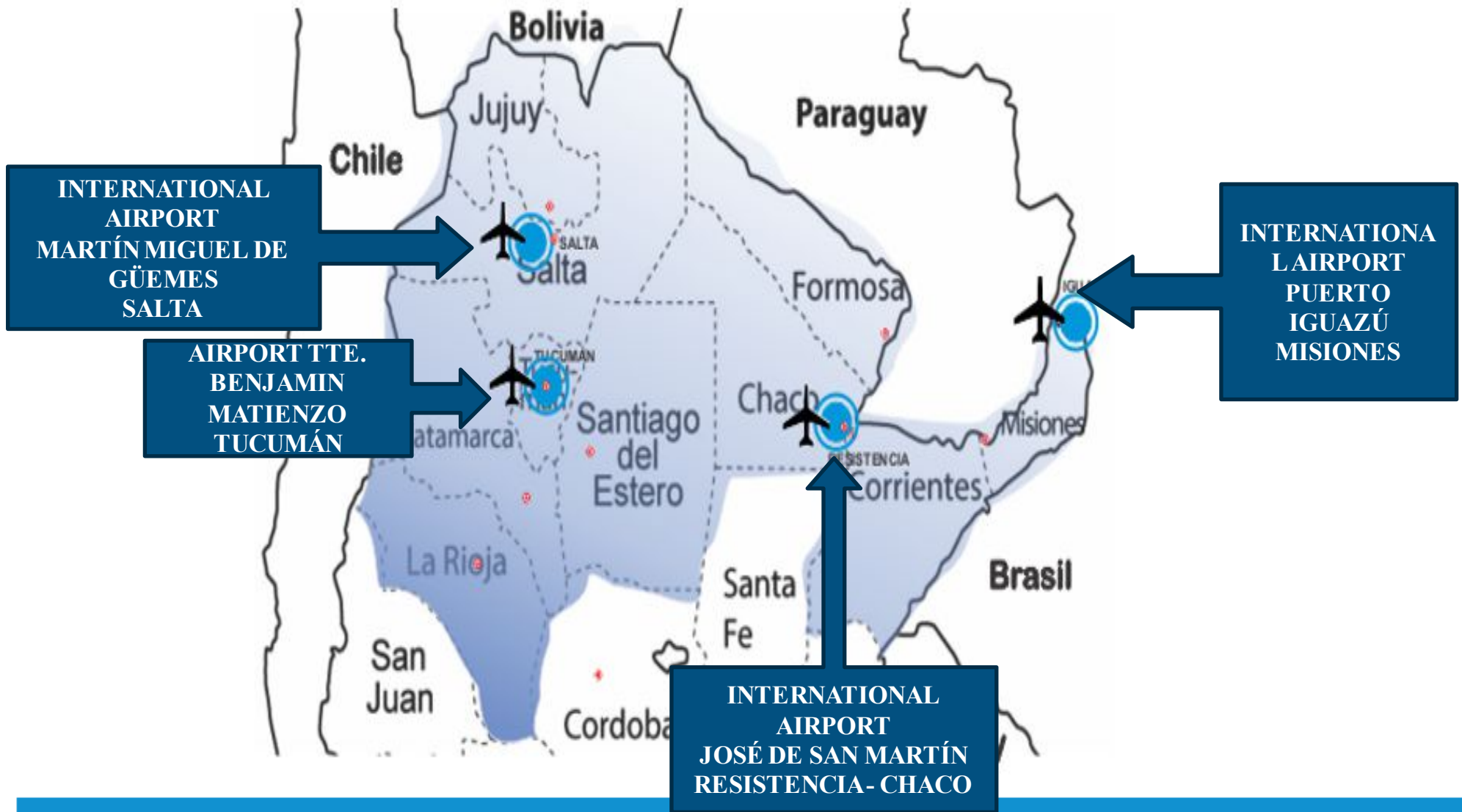
USD 250 million projected investment

Objectives:

- Regional connectivity with the rest of the country and with bordering countries.
- International tourism promotion.
- Increasing exports to non traditional markets.
- Improvement in air navigation safety.

AEROPUERTO	INVERSIÓN (EN DÓLARES)
IGUAZÚ	70.000.000
RESISTENCIA	30.000.000
SALTA	60.000.000
TUCUMÁN	90.000.000
TOTAL	250.000.000

Infraestructura - Airports



Infrastructure - Airports

- **Iguazú airport.** International tourism promotion and connectivity of NEA with Brazil, USA east coast, Europe and Middle East.
- **Resistencia airport.** Increased products and passengers traffic between Brazil, USA east coast and Europe.
- **Salta airport.** Regional tourism promotion, increased products and passengers traffic with Pacific Ocean west coast, Mexico, USA and the Far East.
- **Tucumán airport.** Increased exports of perishable foods and greater value-added products.

Plan Belgrano three main areas

Three groups for the follow-up of the objectives and the prioritization of policies for Northern Argentina:

- **Productive Development and Regional Economies group:** Ministry of Production, Ministry of Agroindustry, Ministry of Labour, Ministry of Science and Technology, Ministry of Environment.
- **Human and Social Development group:** Ministry of Social Development, Ministry of Health, Ministry of Education, Ministry of Labour, Ministry of Modernization, Ministry of Public Works and Housing.
- **Infrastructure group:** Ministry of Public Works and Housing, Ministry of Transportation, Ministry of Labour, ENACOM, ARSAT.

Plan Belgrano – 2016

Project coordination along with other Government areas:

- Livestock Development Plan for the region.
- School infrastructure diagnosis: drinkable water, electricity and connectivity.
- Infrastructure and local economic and social development programs for extreme poor regions.
- Regional healthcare policy for providing lenses, dental prostheses, etc. in rural zones.
- Hunger and Food Security Programs Implementation.
- Follow-up to Early Childhood Centers and pre-schools building policy.
- Alternative construction methods for home and school building.

We need to change Northern Argentina reality

- Investment opportunities in Northern Argentina are usually determined by high profitability natural resources exploitation.
- Changing this reality implies generating medium and long term perspectives and stimulating territorial and production development.
- For this, altogether with the Provinces, Plan Belgrano coordinates policies of different National Government areas that will contribute to poverty reduction.
- Innovation in the design and implementation of policies is a must.
- Dynamic economic development is not only based on functioning markets and individual entrepreneurship but also on collective efforts to shape a supportive environment for business development.



Plan Belgrano must contribute to achieving systemic competitiveness for Northern Argentina.



Thank you

Unidad Plan Belgrano

Av. Pres. Julio A. Roca 782 10° piso

+ 54 11 4342-3981

planbelgrano@jefatura.gob.ar